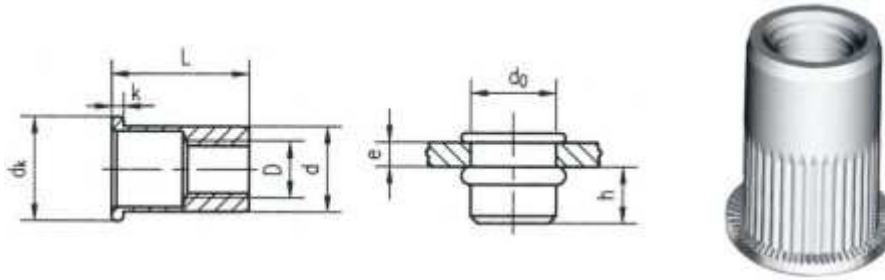


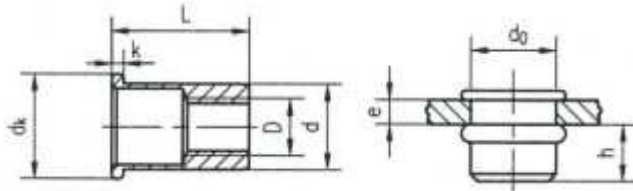
Tuerca Remache Acero Cab./ Plana moleteada



ACERO SAE 1010 ROSCA METRICA MA								
Codigo	Diam.	e	h(ref.)	Agujero d _i +0.15 +0.05	d -0.03 -0.20	dk +/-0.30	K +/- 0.20	L +/- 0.30
URSA3030	M 3	0.5-2.0	4.5	5	5	7.0	0.8	9.0
URSA3040	M 4	0.5-2.0	6.5	6	6	9.0	0.9	11.0
URSA3050	M 5	0.5-2.5	8.0	7	7	10.0	1.1	13.0
URSA3060	M 6	0.5-3.0	9.0	9	9	12.8	1.5	15.0
URSA3080	M 8	0.5-3.5	11.5	11	11	15.0	1.7	18.4
URSA3100	M 10	0.5-3.5	12.5	13	13	17.0	1.8	20.3
URSA3120	M 12	0.5-3.5	15.5	15	15	19.0	1.8	24.3

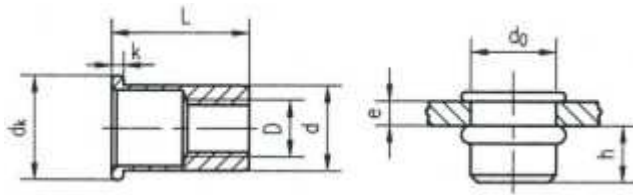
ACERO SAE 1010 ROSCA EN PULGADAS U.N.C.								
Codigo	Diam.	e	h(ref.)	Agujero d _i +0.15 +0.05	d -0.03 -0.20	dk +/-0.30	K +/- 0.20	L +/- 0.30
URSA1047	Nº 10	0.5-2.5	8	7	7	10.00	1.0	13
URSA1063	1/4	0.5-3.0	9	9	9	13.00	1.5	15
URSA1079	5/16	0.5-3.5	11.5	11	11	15.00	1.5	18
URSA1095	3/8	0.5-3.5	12.5	13	13	17.00	1.8	20.3
URSA1127	1/2	1.3-6.3	15.5	15	15	19.30	2.0	24.5

Tuerca Remache Aluminio Cab./ Plana moleteada



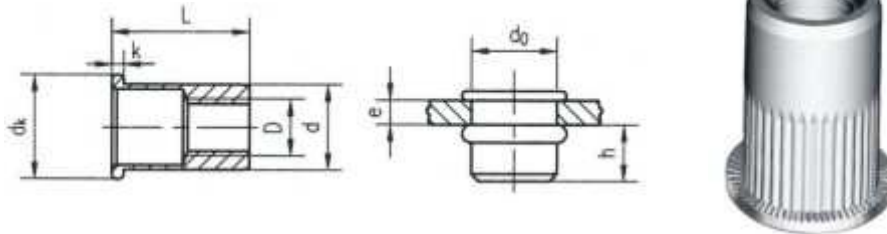
ALUMINIO 5056 Mg. 1,8% ROSCA METRICA MA									
Codigo	Diam.	e	h(ref.)	$\frac{D}{d}$	Agujero d _i +0.15 +0.05	d -0.03 -0.20	dk +/-0.30	K +/- 0.20	L +/- 0.30
URAA3030	M 3	0.5-2.0	0.5-2.0	5.0	6.0	9.0	1.0	12.8	
URAA3040	M 4	0.5-2.0	0.5-2.0	6.0	7.0	10.4	1.0	14.6	
URAA3050	M 5	0.5-2.5	0.5-2.5	9.0	9.0	12.4	1.5	17.2	
URAA3060	M 6	0.5-3.0	0.5-3.0	11.0	11.0	14.7	1.5	19.2	
URAA3080	M 8	0.5-3.5	0.5-3.5	13.0	13.0	16.4	2.0	24.0	

Tuerca Remache Inoxidable 304
Cab./ Plana lisa



INOXIDABLE AISI 304 ROSCA METRICA MA									
Codigo	Diam.	e	h(ref.)	$\frac{H}{h}$	Agujero d _h +0.15 +0.05	d -0.03 -0.20	dk +/-0.30	K +/- 0.20	L +/- 0.30
URIAT3040	M 4	0.5-2.0	6.5	6	6	6	9.0	0.8	10.8
URIAT3050	M 5	0.5-2.5	8.0	7	7	7	10.0	1.0	13.0
URIAT3060	M 6	0.5-3.0	9.0	9	9	9	13.4	1.5	15.0
URIAT3080	M 8	0.5-3.5	11.5	11	11	11	15.0	1.7	18.0
URIAT3100	M 10	0.5-3.5	12.5	13	13	13	17.0	1.7	20.0

Tuerca Remache Inoxidable 304 Cab./ Plana moleteada



INOXIDABLE AISI 304 ROSCA METRICA MA								
Codigo	Diam.	e	h(ref.)	 Agujero	d	dk	K	L
				d _h	d	dk	K	L
URIA3030	M 3	0.5-2.0	6.5	5	5	8.0	0.8	9.9
URIA3040	M 4	0.5-2.0	8.0	6	6	9.0	1.0	12.2
URIA3050	M 5	0.5-2.5	9.0	7	7	9.8	1.0	13.0
URIA3060	M 6	0.5-3.0	11.5	9	9	12.0	1.5	15.6
URIA3080	M 8	0.5-3.5	12.5	11	11	14.8	1.5	17.8
URIA3100	M 10	0.5-3.5	12.5	13	13	17.0	2.0	21.3